

THE COMPANY

RULA Bulk Materials Handling (Pty) Ltd specialises in Pneumatic Conveying Systems for Bulk Minerals as well as silo filling, storage and discharge systems.

RULA is capable of the design and supply of various mechanical handling equipment allowing us, together with various disciplines in Mechanical, C&I and Electrical, Civil and Structural Engineering, to supply turnkey plants from concept design to commissioning. We continuously broaden our base to have a total package for the supply of equipment and process design of systems for various material handling processes.

Apart from the Materials Handling field, RULA has also entered the field of flow dynamics with dynamic piping systems to not only convey material, but also to handle air, steam and water.

We specialise in the handling of bulk minerals, with the combination of pneumatic as well as mechanical handling turnkey plants.

Materials we can assist with include:

- * Fly ash / Bagasse
- * Soda ash
- * Cement
- * Lime
- * Coal
- * Platinum
- * Alumina
- * Gold
- * Ferroalloys

Rula also has access to the following technologies:

- * Pollution control technologies
- * Piping systems (air, steam and water)
- * High efficiency classifiers
- * Boilers (supply and upgrading)

PROJECT MANAGEMENT

- Complete Turnkey Projects from Concept Design to Commissioning
- Construction, Installation and Erection
- After Sales Services – Complete with full Maintenance backup
- Plant Upgrade and Refurbishment
- Feasibility studies

DESIGN & ENGINEERING

- Complete Turnkey Projects
- Pneumatic Handling of Bulk Minerals and Associated Equipment
- Process Design and Automation
- Research and Product Development

Mechanical engineering

- Equipment design and Engineering
- Valves and dampers
- Piping - air and water systems
- Wear resistant equipment and materials
- Ducting - ventilation and de-dusting systems
- Pressure vessels and air receivers
- Dust filtering and scrubber systems
- Large Capacity Storage Silo's and Bins with Filling, Venting & Discharge systems
- Compressor / Roots Blowers / Lateral Channel Blower systems
- Belt Conveyor systems
- Bag Filling systems
- Aeroslide conveying systems
- Dust Handling systems
- Mechanical components

Various other mechanical equipment

Structural steel

The combination of structural steel fabrication, plate / chute fabrication, process engineering, machining and construction offer clients a professional service for their demands.

- Complete Design and Engineering
- Platforms, walkways, staircases and supports
- Lift shafts
- Pipe and conveyor gantries / transfer house
- Steel Silo's and Hoppers
- Silo steel cones

Civil and construction

- Blower- & Compressor houses, Control rooms
- Minipiles
- Gantries, Bases and Plinths
- Culvert bridge & installations
- Transfer house platforms and foundations
- Retaining walls

Earthworks

- Conveyor & Transfer house terraces
- Slab for overland modules
- Stormwater & contaminated water management

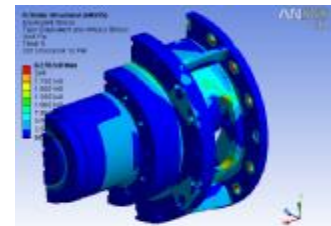
Electrical

RULA has the in-house capabilities to do complete Design, engineering and Project management on Electrical and Instrumentation systems ranging from load calculations, switchgear and PLC's to software developing and operator station configuration.

- Electrical reticulation
- Switch gear design
- Power supply cubicles
- In line air heaters

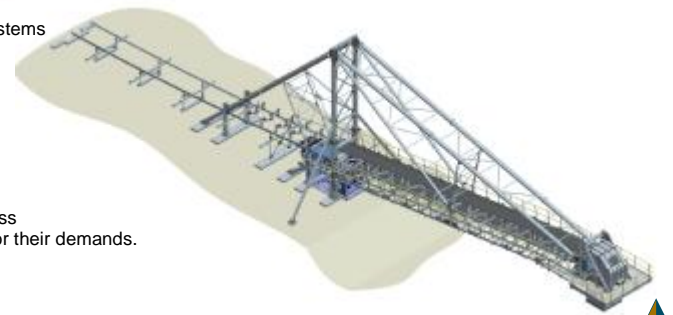
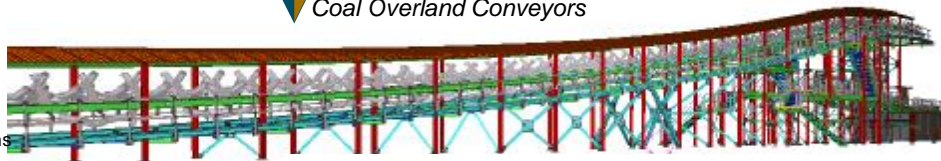
Control and instrumentation

- Local control panels
- Field instrumentation
- Process control
- Mimic and PLC control systems



Stub shaft Finite Element Analysis

Coal Overland Conveyors



Goose neck arrangement



Ash storage silo with pneumatic conveying piping and dust suppression filters

MANUFACTURING

RULA has a dedicated in-house manufacturing unit / workshop with the following equipment

- Hydraulic pro-shear guillotine
- Hydraulic Press Brake
- Plate roller
- Hydraulic Press 50t
- Mobile hydraulic punch
- Horizontal band saw
- Hydraulic profile Shear
- Pedestal drill
- Victor machine Centre
- CNC Lathe – 250 dia – 1.5m length
- Manual Lathe – 550 dia – 2.0m length
- Puma Infracore CNC Lathe (Model 400 LB)
- Milling machine
- Welding Shop
- Sandblasting Shop
- Spray painting Shop
- Assembly Shop
- Dedicated Electrical and C&I Workshop
- Storage facilities

EQUIPMENT SUPPLY

A wide range of specialised Equipment for the Materials Handling Industry is available. Refr
A full range of spare parts are also available

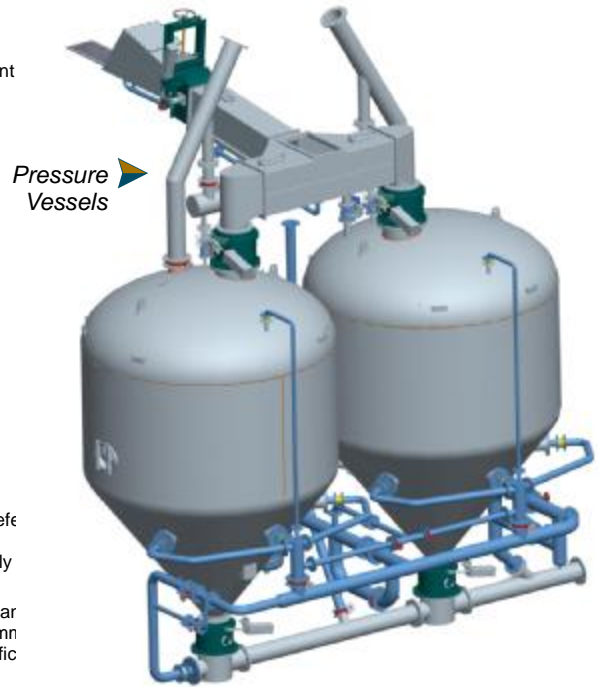
Our product range is expanding continuously, allowing us to supply plants equipped entirely

QUALITY & SAFETY

The committed and primary objective and the declared intention of RULA Bulk Materials Har
monitor manufacture, supply and erect equipment for major clients up to and including com
purpose and their stated performance criteria; specifically in compliance with design specific
RULA has successfully obtained ISO 9001:2008 accreditation.

Our certification scope is Project management, Design, Manufacturing, Supply, Installation &
Bulk Material Handling Plants. Certificate no. 23110909001

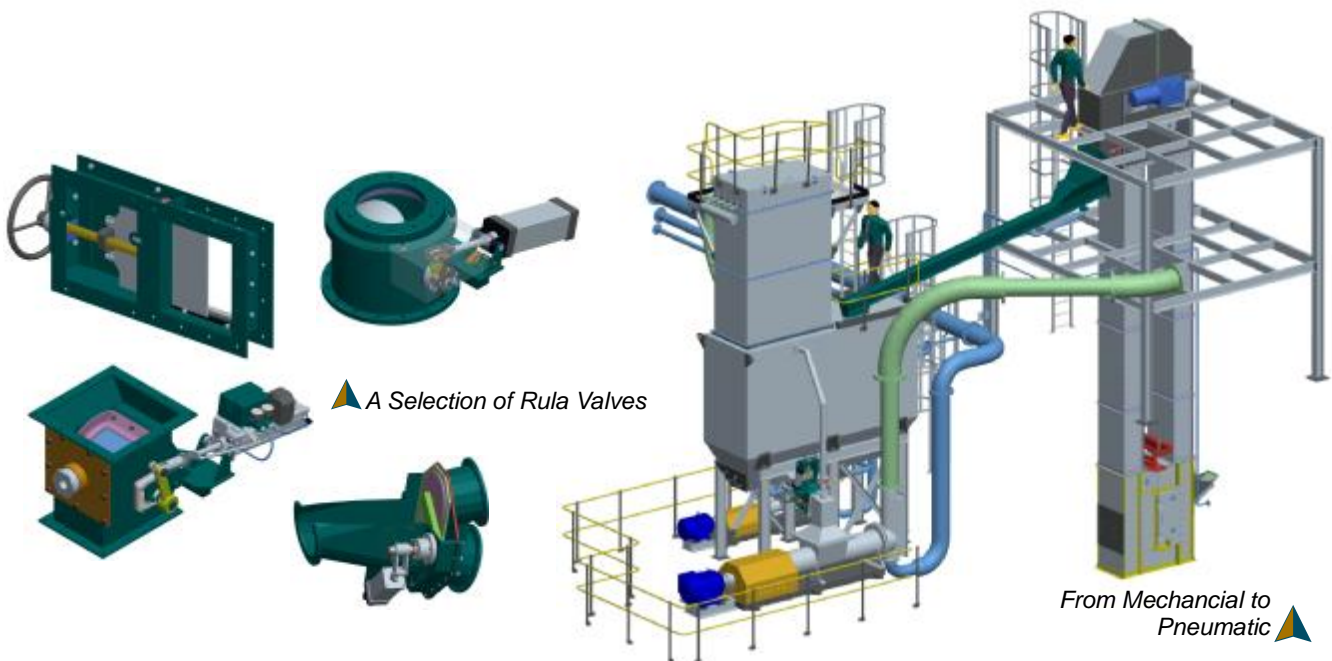
The Health, Safety and Welfare of all employees and the environment are of paramount importance to
RULA Bulk Materials Handling (Pty) Ltd as we acknowledge our employees being our most valuable asset. Management,
in addition to our customer's requirements, set specific goals to continuously improve the standard of Safety, Health and the
Environment in all our operations.



Pressure
Vessels



ISO 9001:2008



A Selection of Rula Valves

From Mechanical to
Pneumatic

